

# SAFETY 1<sup>ST</sup> ULTIMA 3000™

## ULTIMA 3000™ GYM FLOOR COVER MATERIAL

### 1.0 MATERIAL PROPERTIES

Surface finish*	Safety, holographic cube pattern
Fabric core	Single layer, woven polyester
Core weight	4.8 oz/sq.yd.
Weave count	18 x 18
Coating	P.V.C., knife coated process, not extrusion coated or laminate process.
Total cover weight	Not less than 21 oz/sq.yd.

### 2.0 MECHANICAL PROPERTIES

	VALUE	TEST METHOD
Slip-resistant surface*, ADA compliant	0.66 co-efficient of friction	ASTM D1894-01
Tensile strength	375 lbs.	ASTM 5100
Tear strength	90 lbs.	ASTM 5134
Adhesion	35 lbs./inch	ASTM D751
Hydrostatic resistance	430 lbs./inch	ASTM D751
Fire resistance* - <b>Material must meet these 5 fire resistant standards:</b>	California Fire Marshall Underwriter Fire Protection Test UL-214 National Fire Protection Association NFPA 701 (Large scale test) Connecticut Fire Marshall Class 1 Rating State of New York Class A rating	

**Note:** The values presented here are the most recently available and should be used as a guide in your purchasing decision only. Covermaster does not guarantee any results and assumes no obligation or liability in regards to this information whatsoever.

Material\* to be Cover-Gard treated to resist odors and germs. Material to be rot and mildew resistant.

### 3.0 CONSTRUCTION

Material should be in sections 10 ft. wide. All seams thermally welded with a minimum 1" lap weld.

### 4.0 WARRANTY

An eleven (11) year warranty covering materials and workmanship, equivalent to Covermaster Warranty Program, is required.

## ULTIMA SERIES COVERMATE II™ Cover Handling System

PATENT PENDING



SIZE	- 34" wide x 13'2" long x 5'6" high (6 and 8 roller models), 10 roller models 6'6" high.
FRAME*	- 1 1/2" & 2" tubular frame.
FINISH	- Powder coated, scratch resistant, durable SILVER finish.
OUTRIGGERS*	- Retractable with adjustable casters to prevent tipping. Safety orange color.
BRAKES*	- 2 floor locking brakes one at either end of unit.
CASTERS*	- Six non-marking, 6" Colson casters, three at each end, one of which is offset. Minimum 3/4" tread thickness.
ROLLER COLLARS*	- Bright yellow collar on each end of every roller to eliminate finger pinching.
ROLLER BRACKETS*	- Made of polycarbonate with delrin bearings. Mounted with 1/8" shock absorbing rubber pads.
ROLLER SAFETY*	- Safety bolt on each bracket to prevent roller 'pop-ups'.
ROLLERS	- Zinc-flo coated for cleaner handling, 2 1/2" diameter.
FASTENING CLIPS*	- 4 bright yellow, push-on clips for each roller.
LOADING	- 2 polycarbonate hand cranks or optional power winder.
CAPACITY*	- Engineered certified load capacity of 5400 lbs.
PSI POINT LOADING*	- 6 caster design achieves 33% lower point load than 4 caster design.
WARRANTY	- Ultima Series COVERMATE II™ is warranted for a period of 20 years against defects in materials and workmanship.
ASSEMBLY	- Required.

## POWERMATE™ POWER WINDER



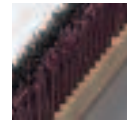
DIMENSIONS	- 17.3" x 3.3" x 7.7".
WEIGHT	- 7.7 lbs.
NOISE RATING*	- Emission at workplace 83 Db.
MOTOR*	- 110V/1200W/50-60 Hz. - Forward/reverse switch. - Thermal overload protection, automatic disconnect includes reset button.
GEAR HEAD	- Automatic infinitely variable rotation 35-27 rpm.
GEAR	- Plastic coated aluminum.
STORAGE	- Includes storage/carrying case.
WARRANTY	- 10 years against defects in materials and workmanship.
HOUSING	- Bright yellow glass fibre reinforced.

## ULTIMA SERIES COVERCLEAN™ DUAL BRUSH SYSTEM

PATENTED



MOUNTING	- Quick connect/disconnect, 1 5/8", 14 gauge drawn channel mounts on both sides of system.
BRUSH ANGLE	- Brush is mounted at a 35° angle to match path of cover travel at each roller height.
BRUSH HEADS	- Dual opposing heads sweep debris from both sides of cover during wind-up.
BRISTLES	- Two rows of 3" bristles. One of black flagged styrene fiber for fine sweeping, the other of red polystyrene fiber for heavy debris. (See photo at left).



\* Each Ultima Series Gym Floor Cover and COVERMATE II™ is manufactured to SAFETY 1<sup>ST</sup> engineered standards



**COVERMASTER™**  
**COVERMASTER**  
**COVERMASTER**

MASTERS IN THE ART OF SPORTS SURFACE COVERS



CALL TOLL FREE  
1-800-693-1677

Learn more  
[covermaster.net](http://covermaster.net)  
E-mail: [info@covermaster.net](mailto:info@covermaster.net)

COVERMASTER INC., 3909 Witmer Road, Suite 187, Niagara Falls, NY 14305-1244 TEL. 716-304-1701